

## Challenges:

As a specialist access contractor providing scaffolding, construction hoists, mastclimber work platforms, common towers, crane decks and cradles there are a range of work environments and impacts on our operations that we have a direct impact on.



These locations include our own premises, whether these are our offices or yards and where we operate as a sub-contractor to our client's construction projects, and the impact from our logistics operations. The Supply Chain Sustainability School has provided us with information, training and guidance across a wide range of critical areas, to assist us in achieving the most appropriate solutions and awareness for our staff.

## Impact:

As an accredited ISO 14001 organisation, Brogan Group has been a long-standing member since 2012 and have used the school's resources and forums to assist in our sustainability journey, to continually improve our performance and reduce our impacts on the environment.

**Supply Chain Days:** Various representatives attended the School's supply chain forums, as an introduction to the school, its aims and operation.

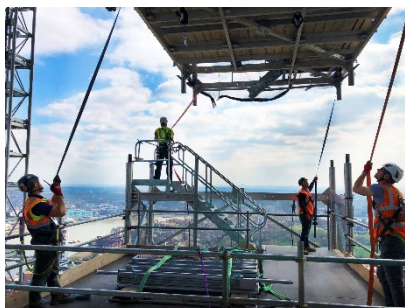
**Self-Assessment & SWOT Analysis:** A cross-functional team was set up to carry out our first company assessment to identify our strengths and weaknesses in relation to sustainability. This introduced new techniques that were able to be researched and implemented to complement our work activities and plant provisions.

**Continual Improvement:** The school's portfolio has continued to expand into new, relevant areas, with training, information and video resources that we have used to communicate to our workforce, on equality, management, sustainability and BIM.

## Value gained:

**Competitive Advantage:** We are proud members of the school as it demonstrates our commitment to our stakeholders and distinguishes us from our competitors.

**Networking** The supply chain days are a positive opportunity to proactively engage with our existing and potential clients to reinforce and develop relationships.



**Efficiency:** The assessments demonstrated key areas to focus on that would generate cost and efficiency savings that would benefit the business, while supporting our ISO accreditation.

**Client Understanding:** The school's resources have assisted Brogan Group in developing a closer understanding of the drivers that our Clients' sustainability and social value goals for the wider community.

**Marketing:** The school's marketing materials are used to set us apart from our competitors in all our branded activities, particularly with tendering and prequalification activity, as it demonstrates our commitment and support to their goals.

## Fact box



### Company

Brogan Group

### No of employees

750+

### HQ

Welwyn Garden City

### Website

[www.brogangroup.com](http://www.brogangroup.com)

### Main contact

James Lewis

[jlewis@brogangroup.com](mailto:jlewis@brogangroup.com)

### Services

Scaffolding, Construction Hoists, Mastclimber Work Platforms, Common Towers, Crane Decks and Cradles

### About

Established in 1988, Brogan Group have continually grown to become one of the leading international providers of specialist access solutions in the UK, Ireland and the UAE.