

Challenges:

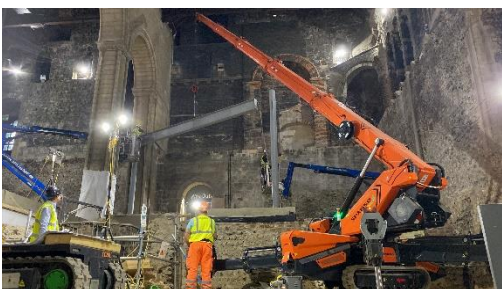
Crofton Engineering Ltd's biggest initial sustainability challenge was the recording and gathering of data. As a company turning over £7 million per annum, Crofton Engineering raises over 1,500 purchase orders each year across 10 different staff members, with each order containing varying amounts of recordable data. By the end of the year, managing this data had become an overwhelming task, which led to the realization that planning ahead was necessary to recover the information efficiently.

In response, Crofton Engineering implemented a strategy that requires Purchase Order numbers not to be raised by the accounts department until the relevant requesting staff member provides key carbon-related information, such as material quantities or transport mileage. This proactive approach made the end-of-year task of inputting data into the Carbon Calculator more manageable and allowed the company to compile its first set of carbon data successfully.

The next significant challenge Crofton Engineering faces is that 99% of its carbon emissions stem from the highly energy-intensive process of manufacturing steel. Although there are more carbon-efficient steel manufacturing processes available, they are not yet commercially viable upfront due to the minimum order quantities required. To address this, Crofton Engineering recognises the need for greater support from clients, the government, and main contractors during the tender stage of major contracts.

In projects involving high quantities of specific material sizes, Crofton Engineering has been able to commit to these more efficient section sizes without significant cost disadvantages, although such projects remain limited in number.

Additionally, Crofton Engineering takes pride in its recent project at the Grade 1 listed Norwich Castle, where over 100 tonnes of structural steelwork were erected using fully electric equipment, including Spider Cranes, Spider MEWPs, and Tracked Bogie Carriers, demonstrating the company's commitment to sustainability in its operations.



Fact box

Crofton Engineering

Company

Crofton Engineering Ltd

No of employees

22

HQ

Linton, Cambridge

Website

www.crofton-eng.co.uk

Main contact

Adam McGregor

adam@crofton-eng.co.uk

Services

Crofton Engineering provide specialist services in Design, supply and installation of Structural Steelwork with experience in refurbishment and new-build projects, Architectural Metalwork including bespoke staircase, balustrades (including glass), handrails, and Fire Training Buildings. We have experience in new build and refurbishment projects.

About

Formed in 1953, the company has over 75 years' experience in these specialised fields. We pride ourselves in providing high quality products and services. We have achieved and maintain CHAS, Constructionline, Builders Profile, CQMS accreditations. We maintain £10m Professional indemnity Cover and provide full scope of design works including early engagement design works and vale engineering services.

Impact:

The main impact Crofton Engineering Ltd has observed from using the School is an increase in employee engagement on topics they might not have otherwise discussed. This engagement has fostered a general enthusiasm across all levels to improve and do better in terms of sustainability.

Additionally, Crofton Engineering has utilised specific subjects from the School, such as "Managing Challenging Conversations," to support the development and improve the performance of employees who have faced difficulties in particular areas. This flexibility has allowed staff to engage with the material at times convenient to them, further contributing to their personal growth and the overall performance of the company.

Value gained:

Crofton Engineering Ltd has found that staff appreciate the flexible nature of the topics provided by the School, allowing them to engage in training and refresh their knowledge at times that suit their individual schedules. The company has also utilised the School in group sessions, which has led to active discussions among staff afterwards.

One particularly valuable session was on the "Procurement of HVO fuel," which provided the team of Site Managers with genuinely useful knowledge they have been able to apply in their day-to-day work. Furthermore, these sessions have helped to initiate regular discussions in the office on sustainability topics, keeping the information fresh in the minds of staff and encouraging continuous improvement.

Future proofing:

Crofton Engineering Ltd plans to regularly utilise the School and its resources to further develop the knowledge of its management and staff. The company is eager to see more impactful content contributed by the School, which will support the ongoing development of Crofton Engineering's workplace culture and operational practices.

The flexibility the School offers, allowing individuals to engage and learn at their own pace and convenience, has been a major positive for the company. This freedom to learn has only increased enthusiasm across the business, encouraging continuous growth and a commitment to ongoing education in sustainability.